

THE GENUINE
T.G. MANDT
WAGON.

MOLINE PLOW CO.

GENUINE
T. G. MANDT
WAGONS

MANDT FARM, MOUNTAIN AND MARKET WAGONS,
TRUCKS, TEAMING GEARS, BOB SLEDS
AND MANURE SPREADERS



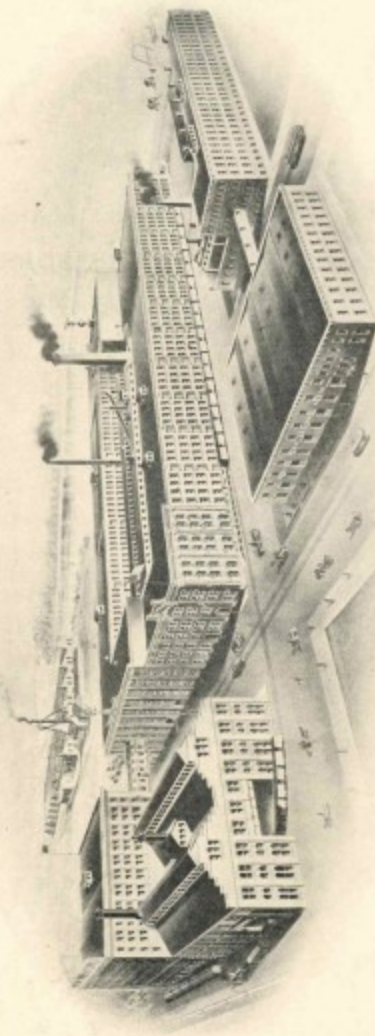
MOLINE PLOW CO.
MANDT WAGON BRANCH

Main Office: Moline, Illinois
Factory: Stoughton, Wisconsin

PRINTING DEPARTMENT
MOLINE PLOW CO.
MOLINE, ILL.

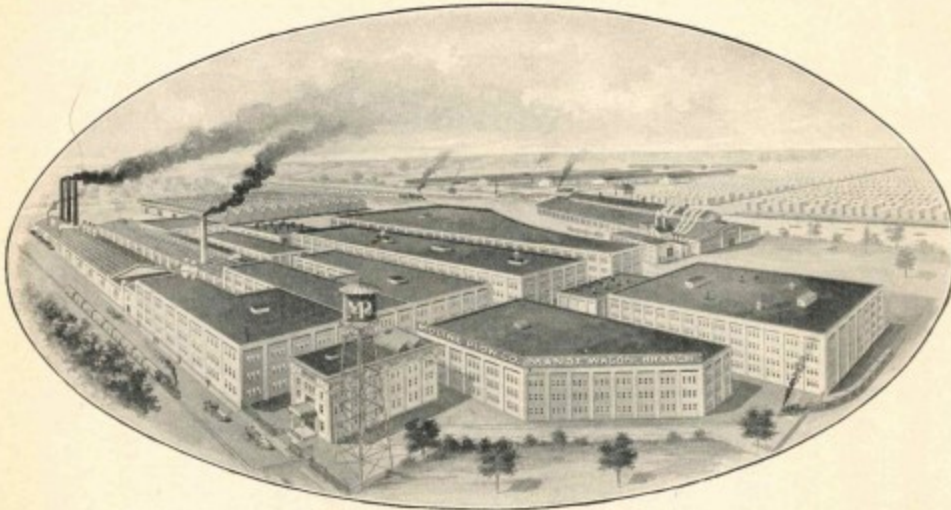
#7547

MOLINE PLOW CO. THE GENUINE T. G. MANDT WAGON. MANDT WAGON BRANCH

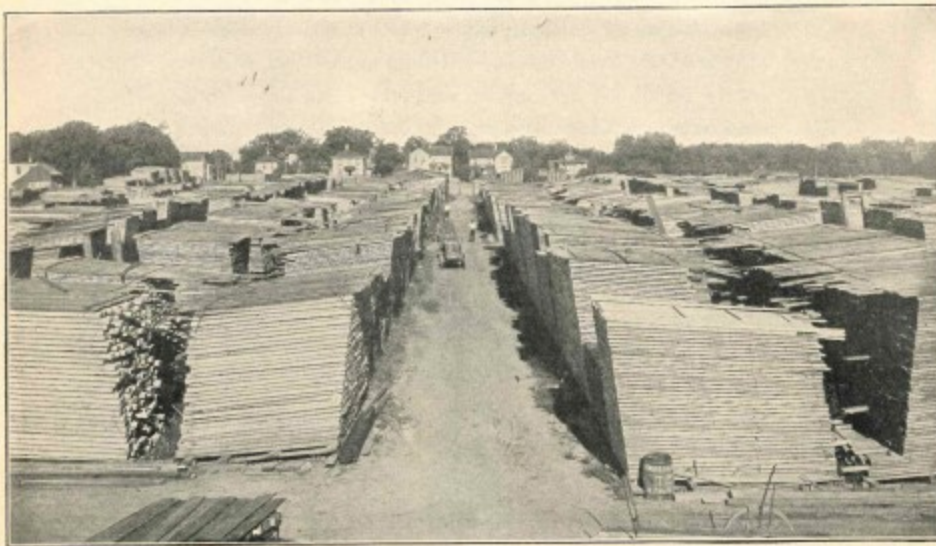


FACTORY OF MOLINE PLOW COMPANY, MOLINE, ILLINOIS
The Home of "The Flying Dutchman Line"

MOLINE PLOW CO. **THE GENUINE T.G. MANDT WAGON.** MANDT WAGON BRANCH



THE MANDT WAGON AND SPREADER FACTORY, STOUGHTON, WIS.



A CORNER OF THE IMMENSE LUMBER YARD
The Entire Yard Covers 32 Acres

MOLINE PLOW CO.



MANDT WAGON BRANCH

Warranty

The Genuine T. G. MANDT WAGONS are sold and purchased under the following conditions of Warranty:

The Manufacturers guarantee this Wagon to be well made, of good and seasoned materials. They will furnish free of charge, through the Dealer or selling agent, such new parts as are necessary to replace those proving defective in either materials or workmanship within one year from date of sale to purchaser, or at their option, will pay in cash an amount equal to the charges they would make to the Dealer for such parts: provided, that the checking of hubs not caused by reason of unseasoned material, and box sides that split from other causes than unseasoned material or defective workmanship, shall not be claimed as defects. Seat springs may be reasonably tested at time of purchase, but will not be replaced if broken after leaving Dealer's hands. It is also agreed that they will not be responsible for any damage other than the replacing of defective parts as above stated.



MOLINE PLOW CO.



MANDT WAGON BRANCH

Introductory

THAT the late T. G. Mandt did more during his lifetime to improve the Farm Wagon, than did all of the other makers of Wagons combined, during the past one hundred years, is generally conceded by every one familiar with the Farm Wagon industry.

In the year 1902—shortly after his death—the Moline Plow Co., purchased a controlling interest in the factory, patents and good will of this business.

The output of the plant at that time was between 4,000 and 5,000 Wagons annually, the greater portion of which were sold by the Moline Plow Co.

The factory was operated first as a separate organization, and a few years later in 1906, was taken over entirely and became a part of the Moline Plow Co.

The capacity and output of the plant at this date is over seven times greater than it was at the time we purchased it. This alone is evidence of the popularity of the Genuine T. G. MANDT WAGON, due to the value of the many special features peculiar to it.

Some of the inventions of Mr. Mandt are used by other concerns, but they are able to use only those on which the patents have expired. The more valuable ones are securely covered by patents which belong to this Company, and are used exclusively on the "Genuine T. G. MANDT WAGON."

Our Plant at Stoughton now covers an area equal to that of many small farms. The Wood stock is carried there in large quantities, and we have every facility for the care of this material, and the perfect equipment necessary for the manufacture of an up-to-date product.

Owing to the value and popularity of the inventions of T. G. Mandt, we find it advisable to caution our Dealers and all buyers of Farm Wagons and Bobsleds, that there is but one Genuine T. G. MANDT WAGON and one Genuine T. G. MANDT Bobsled. These are manufactured by the MOLINE PLOW CO., Mandt Wagon Branch, at Stoughton, Wis., and none are Genuine without this brand, all others are imitations and inferior articles.

In addition to Wagons, Trucks and Bobsleds, we also build in this plant, a complete line of Manure Spreaders and Hay Tools, the latter being of sufficient importance to require a special catalog, a copy of which will be mailed upon request

Main Office, Moline, Ill.
Factory, Stoughton, Wis

MOLINE PLOW CO.,
MANDT WAGON BRANCH.

MOLINE PLOW CO.



MANDT WAGON BRANCH

Points of Merit of the T. G. Mandt Wagon

Beginning at the end of the pole and continuing to the patent end-gate, the superior points and distinctive features of these wagons are evident at a glance. No detail of material, design, labor or finish is overlooked. They are as nearly perfect as can be built.

Tongues—Are of clear straight grained oak or white ash.

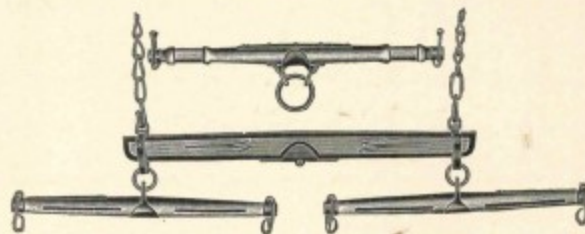
The tongue cap, which is made of $1\frac{1}{2} \times \frac{1}{2}$ -inch steel instead of sheet iron, extends the entire length of pole underneath and is riveted on, making a steel truss, keeping the pole perfectly straight, and preventing breakage should a horse lie down on it. It extends well back on top of the pole, preventing the horses from gnawing the wood, and will not rot the pole like a wide tongue cap. It is ironed all around with a malleable clip, preventing the neckyoke rings from wearing the wood or cutting off the tongue cap underneath. It has a safety catch in front of hold-back, preventing tongue from dropping out of neckyoke ring,—thus preventing many a runaway and serious accident by tugs becoming unhitched.



Steel Trussed Tongue

Neckyokes—Are far superior to those usually furnished. They are made of the best shell bark and black hickory, thoroughly seasoned, and well finished.

The neckyoke center clip is made with loops to attach to small rings, and also to protect the neckyoke from wear of tongue, avoiding weakening the yoke by boring large holes for eyebolts.



Doubletree and Neckyoke

Eveners—Are of selected hickory and are strengthened by a malleable iron center, combining in one piece, top, bottom and front plate, and are not weakened by the hole bored for the draw pin, as are the ordinary kind. The end holes are bushed to prevent wear from the clevis pins, and ends are riveted to keep from splitting.

Clevises—Are of steel, extra heavy, and have self locking pins, which cannot lose out.



End of Evener Showing
Malleable Bushing



Evener Center

The Singletrees—Have steel hooks and wheel rub irons. They will be furnished with strap ends instead of ferrules, when specially ordered.

MOLINE PLOW CO.

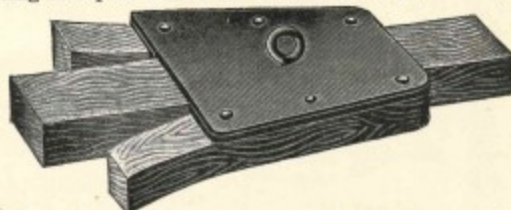
THE GENUINE
T.G. MANDT
WAGON.

MANDT WAGON BRANCH

Reaches—Are of clear straight grained oak, and are protected at front ends by malleable plates, reaching half way through them from each side and forming a bushing for the king bolt—preventing wear or splitting out of the wood.



Reach Plates—Are of steel with a spring steel plate into which a nut is riveted, which may



be screwed up tight to prevent all wear and rattling. This also makes it possible to couple the wagon long enough for a hay rack without putting in an extra long reach.

This cut illustrates a sectional view of the reach plate, showing the coupling pin screwed into the curved spring plate underneath the reach, to which the lock nut is firmly riveted, which draws the reach to upper plate and prevents all rattling, and the reach may be extended its entire length.

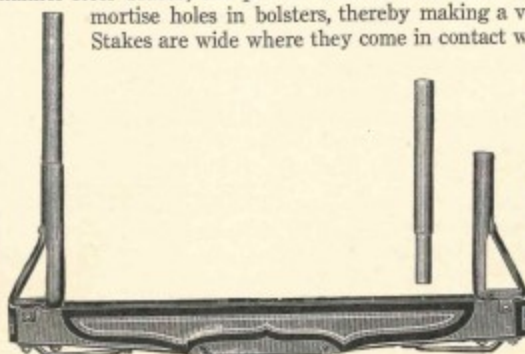
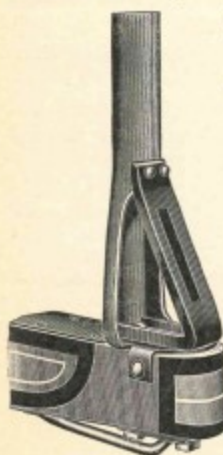


Bolsters—Are of clear oak or hickory, thoroughly air seasoned, which retains the natural strength and quality necessary to resist the greatest strains. Bolsters are ironed full length on top with 3-inch steel wearing plates.

Mandt Patent Steel Bolster Stakes—All Mandt Wagons are provided with steel stakes, which are not only stronger and more convenient than the wood stakes, but do not weaken the bolsters at the mortise, or allow water to run in and rot the stake and bolster—an exclusive Mandt feature.

These stakes are drop forged from one plate of steel 3-16-inch thick with channel steel braces; are put on bolsters with three bolts, avoiding stake mortise holes in bolsters, thereby making a very durable bolster. Stakes are wide where they come in contact with side-boards and

protect them from being worn into, so common with ordinary stake irons. Stakes are made hollow and admit extension wooden stakes of 1½-inch diameter. For strength and looks they have no equal, and all annoyance of rattling rings is obviated.



Mandt Front Bolster with Hollow Steel Stakes

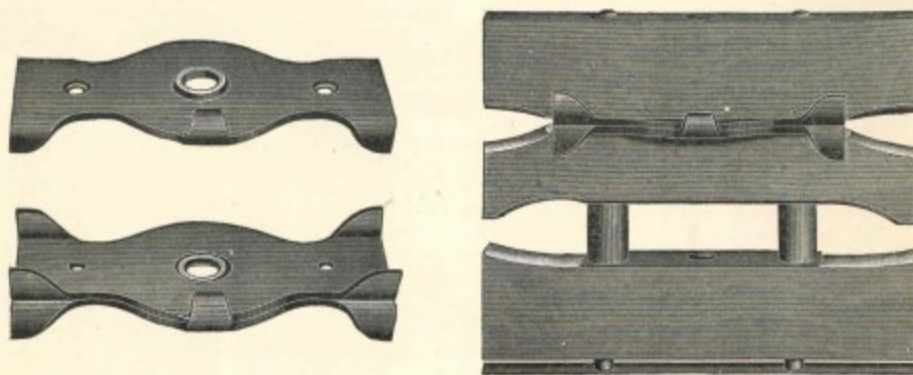
MOLINE PLOW CO.



MANDT WAGON BRANCH

Bolster Plates—These patented self-locking bolster plates are made from heavy open hearth steel plate, of extra length of twelve inches, have a six-inch circle, with outward projecting lips at ends which are fitted to bolster and sandboard, always keeping in place and preventing bolster plates from becoming loose.

The lower plate has a catch, locking upper and lower plates together, preventing bolster and king-bolt from lifting out when box or rack is taken off wagon gear. Lower plate has a raised center, preventing king-bolt from wear and breakage, and will carry a top heavy load level. Its superiority over all others can be seen at a glance.



Front Hounds. Are of special construction, of heavy angle steel, re-inforced by a wood filler extending from the axle to the end of hound. This prevents the hound from cutting into the axle at the gain.

This steel hound is in every way superior to the old style bent wood or three-piece hound. It will not rot—is practically unbreakable, being stronger than the wood.



Axles—The T. G. Mandt Wagon is built in two styles—**The Mandt Cast Skein Steel Axle** and the regular style **Cast Skein Hickory Axle.**

Steel Axles—This is an age of steel—partly through necessity, owing to the scarcity of wood stock, and partly through the demand for greater strength, there has been a gradual substitution of steel for wood in the construction of Railroad Cars, Bridges, Buildings and Farm Machinery.

Following the trend of the times—always blazing the trail in Farm Wagon construction—the Mandt was the first to invent and perfect a Cast Skein Steel Axle. This construction is covered by a patent and cannot be used by other companies during the life of the patent.

A careful examination of the following detailed description, illustrated by sectional views of the Axle, Skein and boxing, will convince any reader of the superiority of the Mandt Cast Skein Steel Axle construction.

MOLINE PLOW CO.

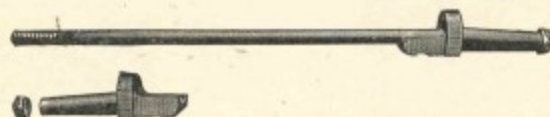
THE GENUINE
T. G. MANDT
WAGON.

MANDT WAGON BRANCH

For extra hard service we recommend our Mandt Cast Skein Steel Axle gears which combine the strength of the ordinary steel axle wagon with the large bearing and easy running qualities of the cast thimble skein, at the same time retaining our dust and sand proof collars. We guarantee these wagons to carry as much as any hickory axle thimble skein wagon made of one size larger capacity. In fact, the axle will carry about twice as much as a hickory axle, but as our wheels are only about one-sixth stronger than those of other first-class wagons, this is as much as we can guarantee them to carry.

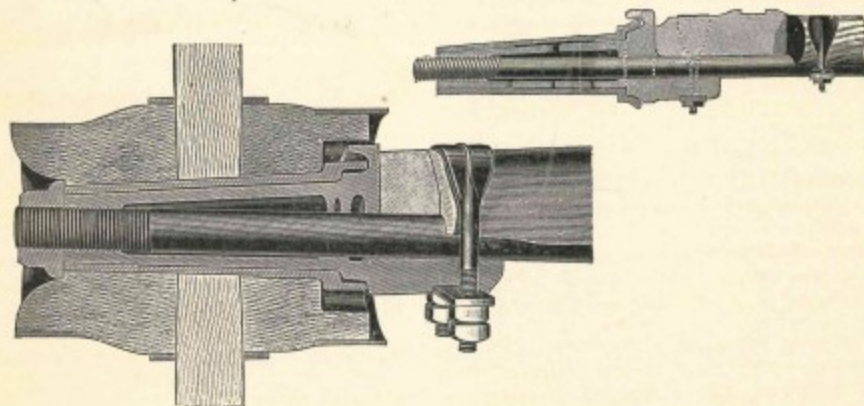
The strength of the axle is increased by the heavy axle bed which is fastened to the axle by six clips. The steel itself is stiff, yet tough and elastic. None of the wear comes on the axle.

When the skeins wear out, anyone who can handle a monkey wrench can take the old skeins off and put new ones on, as the axles are perfectly straight, the skeins being bored to have the right set and gather, thus avoiding the delay and expense of taking the axle to the repair shop.



The axle is made from special high carbon open hearth steel; is stiff and elastic, and strong enough to carry double the load of an ordinary axle. Will not bend or break. Axle is perfectly straight. The skein is bored with the right set and gather and every one is exactly alike, insuring an easy running wagon in every case. There is no wear on the axle. The skein can be easily replaced if worn out. It does not require a wagon maker or a blacksmith to take off a skein and put on another. Wheels are interchangeable with the wood axle wagons.

These cuts illustrate sectional views of axle, showing how skein is screwed on the axle



Sectional view of steel axle with sand collar, skein and hub, which make it absolutely sand and dust proof—similar to the construction of our famous "dust proof" Mandt cast skein wood axle wagons, which every farmer knows hold the grease and run longer than any other wagon on the market.